

# Decision Making Framework



**ETHICAL  
FRAMEWORK**



**HEALTH EQUITY  
FRAMEWORK**



**QUALITY  
FRAMEWORK**



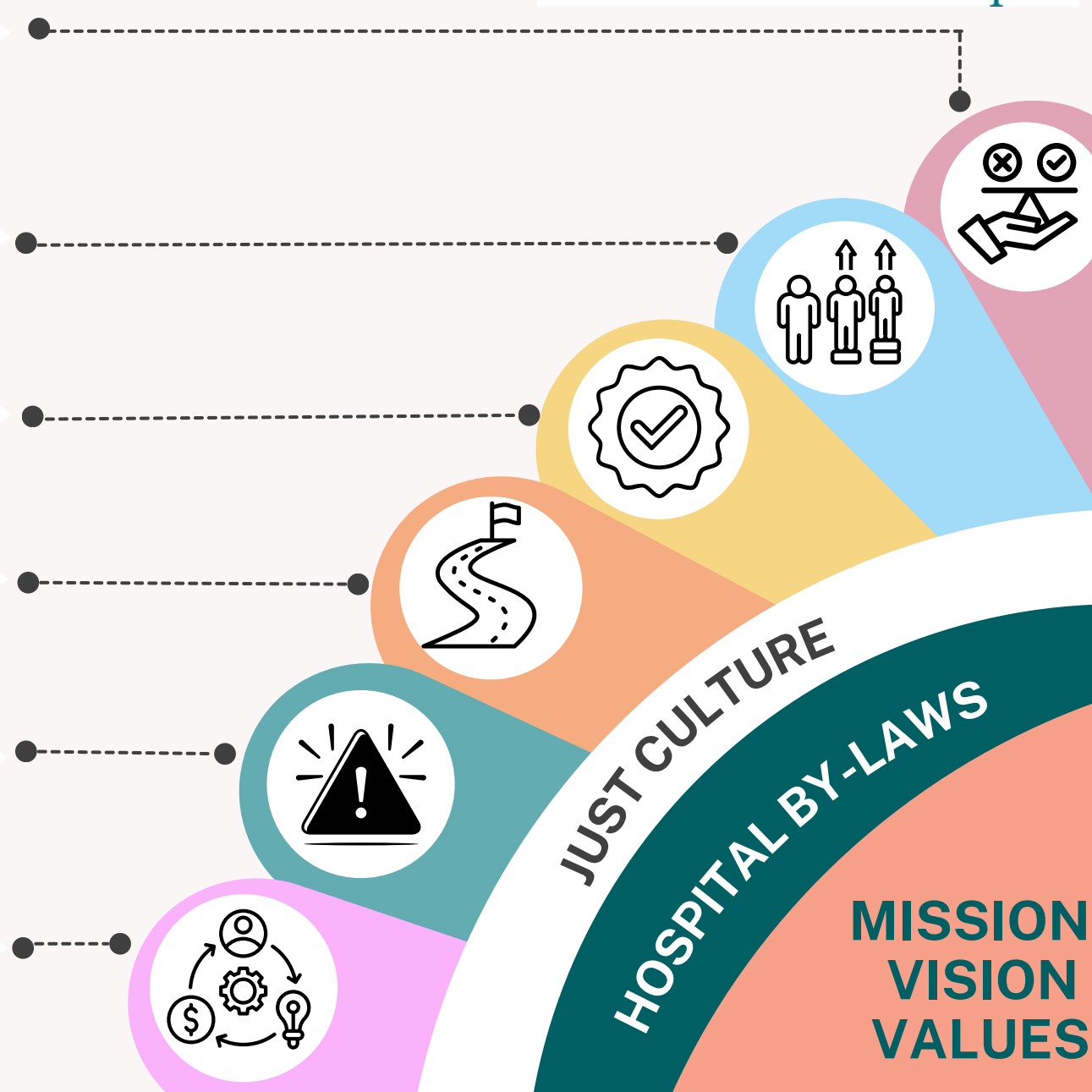
**STRAT PLAN**



**ENTERPRISE  
RISK  
MANAGEMENT**



**BUSINESS  
CONTINUITY**



**JUST CULTURE**  
**HOSPITAL BY-LAWS**

**MISSION  
VISION  
VALUES**